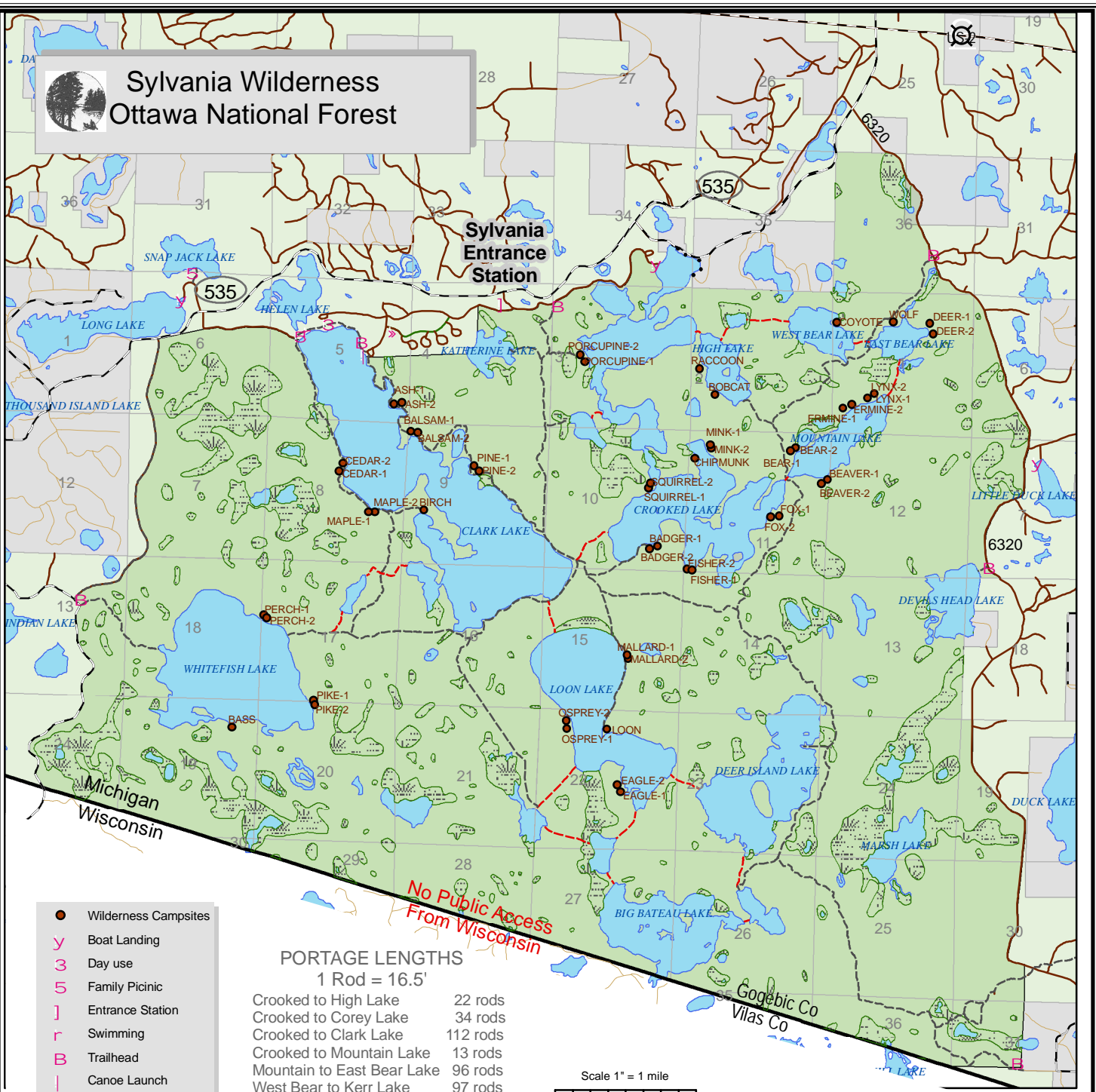




# Sylvania Wilderness Ottawa National Forest

**Sylvania  
Entrance  
Station**

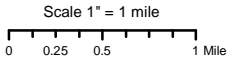


- Wilderness Campsites
- Y Boat Landing
- 3 Day use
- 5 Family Picnic
- J Entrance Station
- r Swimming
- B Trailhead
- | Canoe Launch
- Trailer Dump Station
- Hiking Trail
- - - Portage
- - - County or State roads
- Forest Service roads
- Other Roads
- Sylvania Wilderness
- Marsh
- Forest Service Land
- Non-FS Land

### PORTAGE LENGTHS 1 Rod = 16.5'

Crooked to High Lake	22 rods
Crooked to Corey Lake	34 rods
Crooked to Clark Lake	112 rods
Crooked to Mountain Lake	13 rods
Mountain to East Bear Lake	96 rods
West Bear to Kerr Lake	97 rods
West Bear to East Bear Lake	40 rods
High to Kerr Lake	38 rods
Clark to Loon Lake	99 rods
Glimmerglass to Hay Lake	126 rods
Whitefish to Hay Lake	158 rods
Whitefish to parking lot	242 rods
Loon to Fisher Lake	140 rods
Loon to Florence Lake	78 rods
Loon to Deer Island Lake	92 rods
Deer Island to Cub Lake	79 rods
Cub to Big Bateau Lake	7 rods
Florence to Fisher Lake	133 rods
Florence to Big Bateau Lake	34 rods

*No Public Access  
From Wisconsin*



The Forest Service uses the most current and complete data available. GIS data and product accuracy may vary. They may be developed from sources of differing accuracy, accurate only at certain scales, based on modeling or interpretation, incomplete while being created or revised, etc. Using GIS products for purposes other than those for which they were created, may yield inaccurate or misleading results. The Forest Service reserves the right to correct, update, modify, or replace GIS products without notification. The Forest Service will not be liable for any activity involving this information. For more information, contact: Ottawa National Forest GIS Coordinator 906/932-1330.